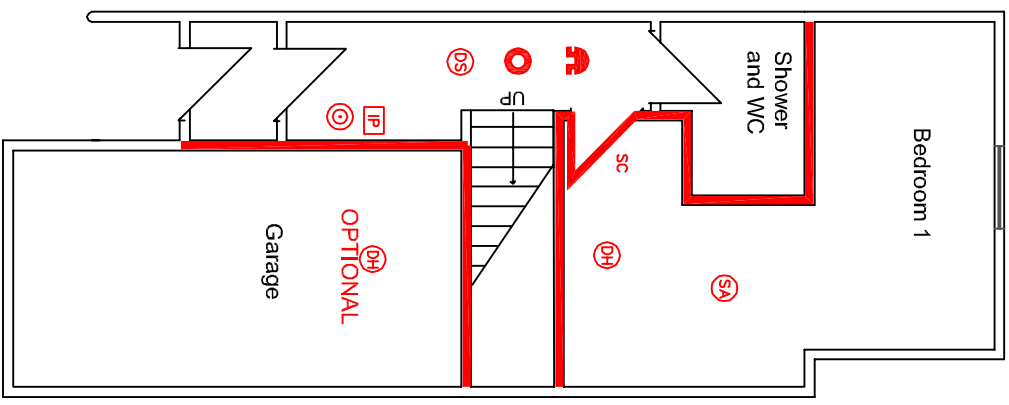


**DRAWING NO. 30**

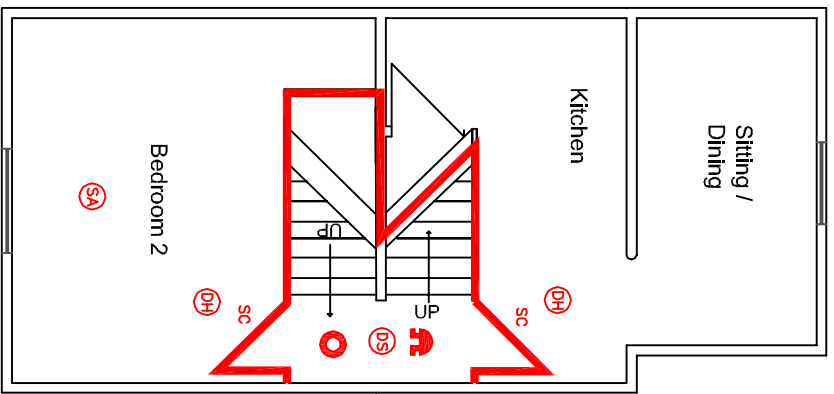
3 Storey property  
Bedsits on each floor

January 2009

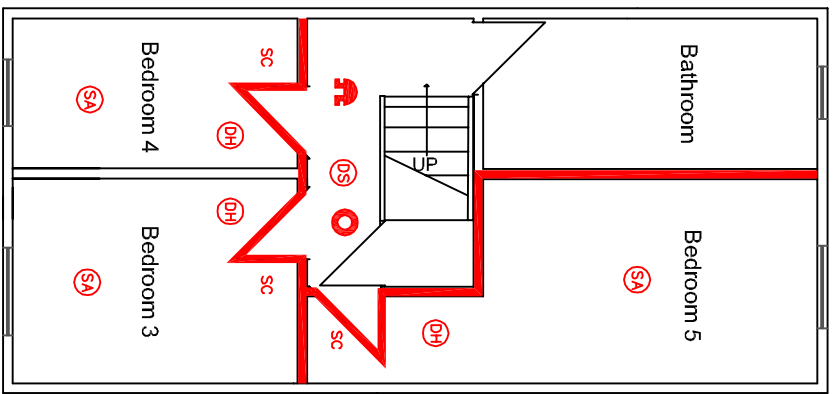
Ground Floor



First Floor



Second Floor



KEY

- DS Smoke detector linked to whole house system
- DH Heat detector linked to whole house system
- Manual call point linked to whole house system
- Sounder linked to whole house system
- Control and indicator panel linked to whole house system
- Emergency lighting
- FD30S fire door with self closing device
- 30 minutes fire resistance
- SA Smoke alarm with internal sounder