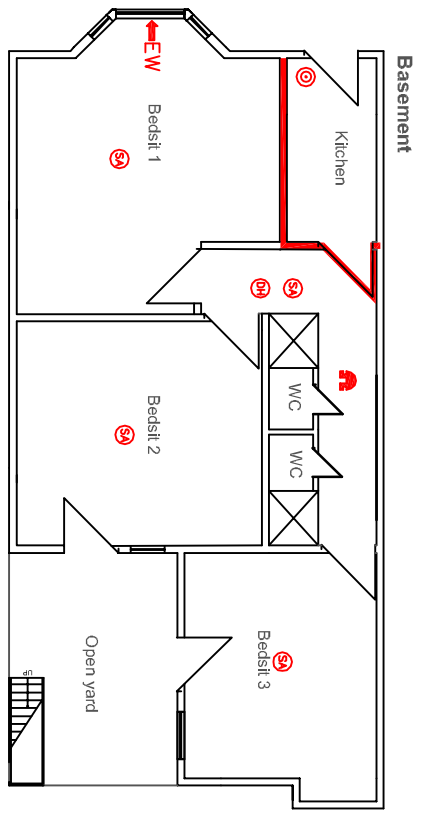
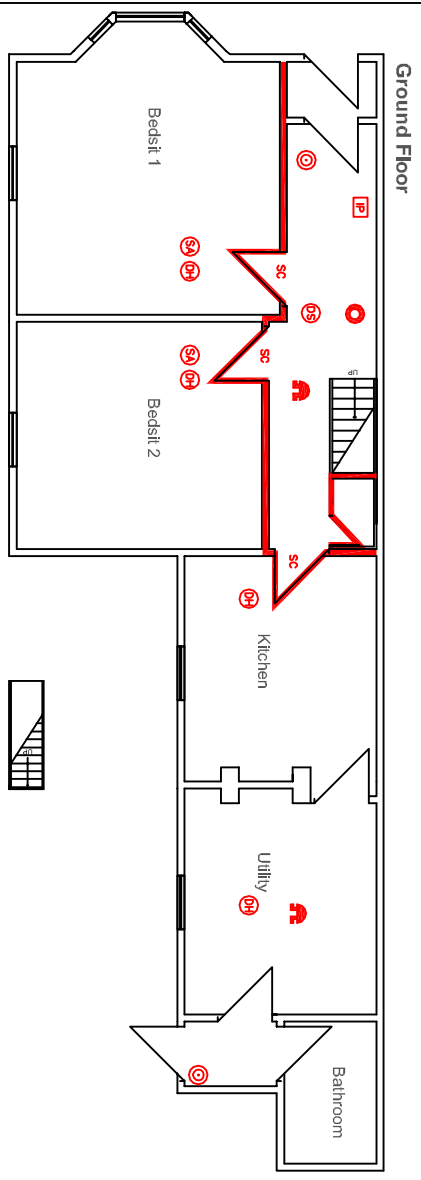
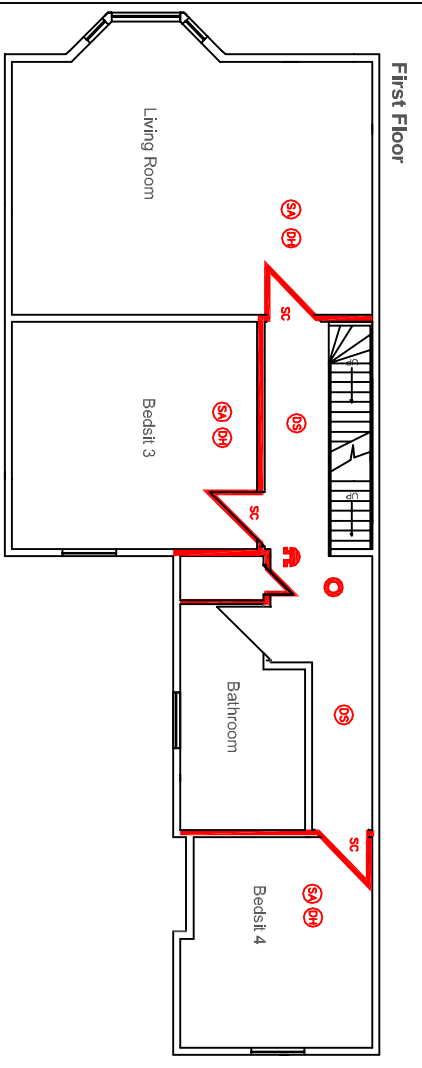
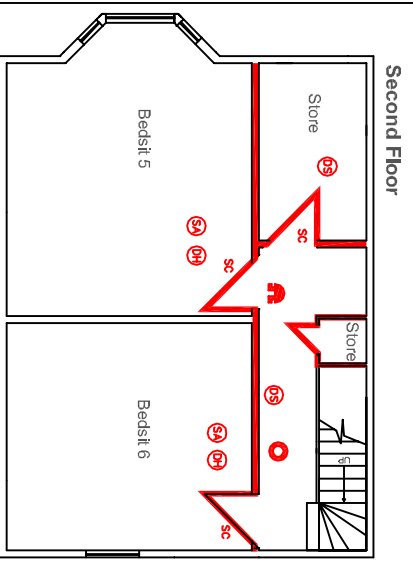


DRAWING NO. 24
 3 Storey property and basement
 Self contained Bedstis in basement
 Bedstis on all other floors
 January 2009



- Smoke detector linked to whole house system
- Heat detector linked to whole house system
- Manual call point linked to whole house system
- Sounder linked to whole house system
- Control and indicator panel linked to whole house system
- Emergency lighting
- FD305 fire door with self closing device
- 30 minutes fire resistance
- Smoke alarm with internal sounder – not linked to whole house system
- Escape window