

DRAWING NO. 17  
 3 Storey plus cellar.  
 GF Flat  
 FF/2F Flat.  
 January 2009

Ⓛ Smoke detector  
 linked to whole  
 house system

Ⓛ Heat detector  
 linked to whole  
 house system

Ⓛ Manual call point  
 linked to whole  
 house system

Ⓛ Sounder linked  
 to whole house  
 system

Ⓛ Control and indicator  
 panel linked to whole  
 house system

Ⓛ Emergency lighting

Ⓛ Optional heat alarm –  
 with internal sounder not  
 linked to whole house  
 system

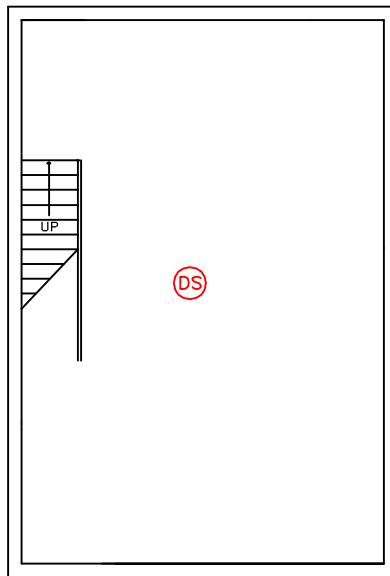
Ⓛ Smoke alarm with internal  
 sounder not linked to  
 whole house system

Ⓛ Entrance door  
 FD30S fire door with  
 self closing device

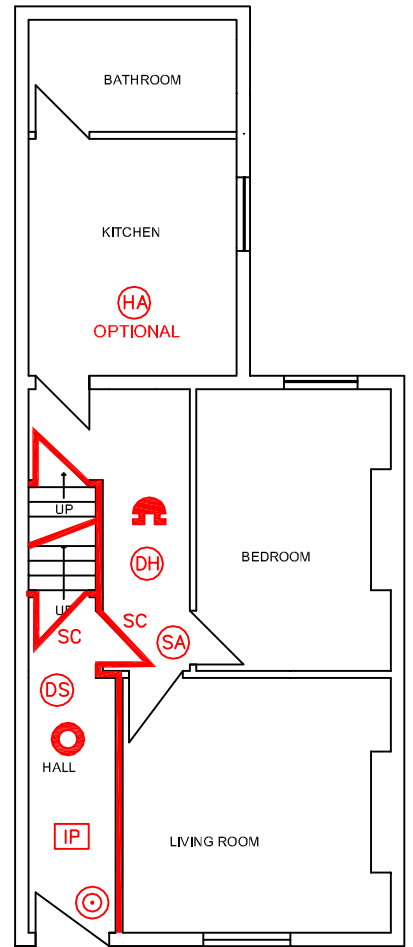
— 30 minutes fire resistance

Ⓛ Substantial solid doors  
 in two storey flat

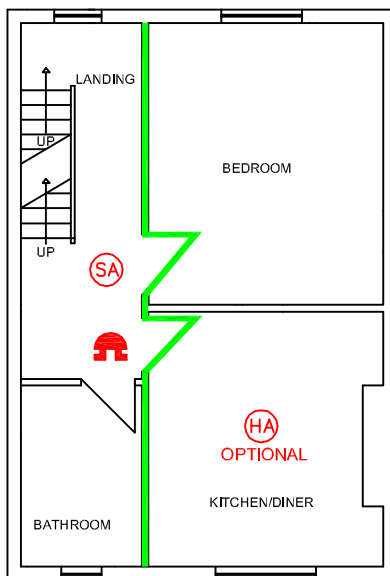
— Sound traditional construction  
 in two storey flat



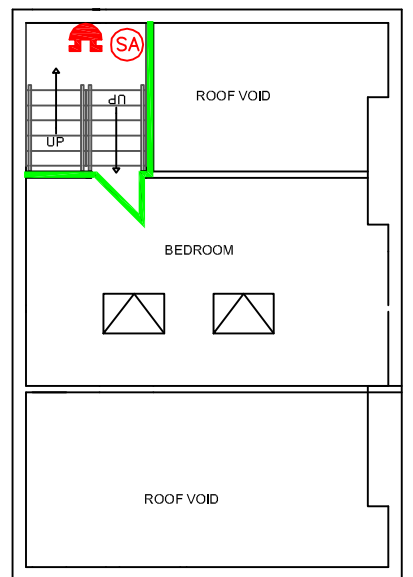
CELLAR



GROUND FLOOR



FIRST FLOOR



SECOND FLOOR